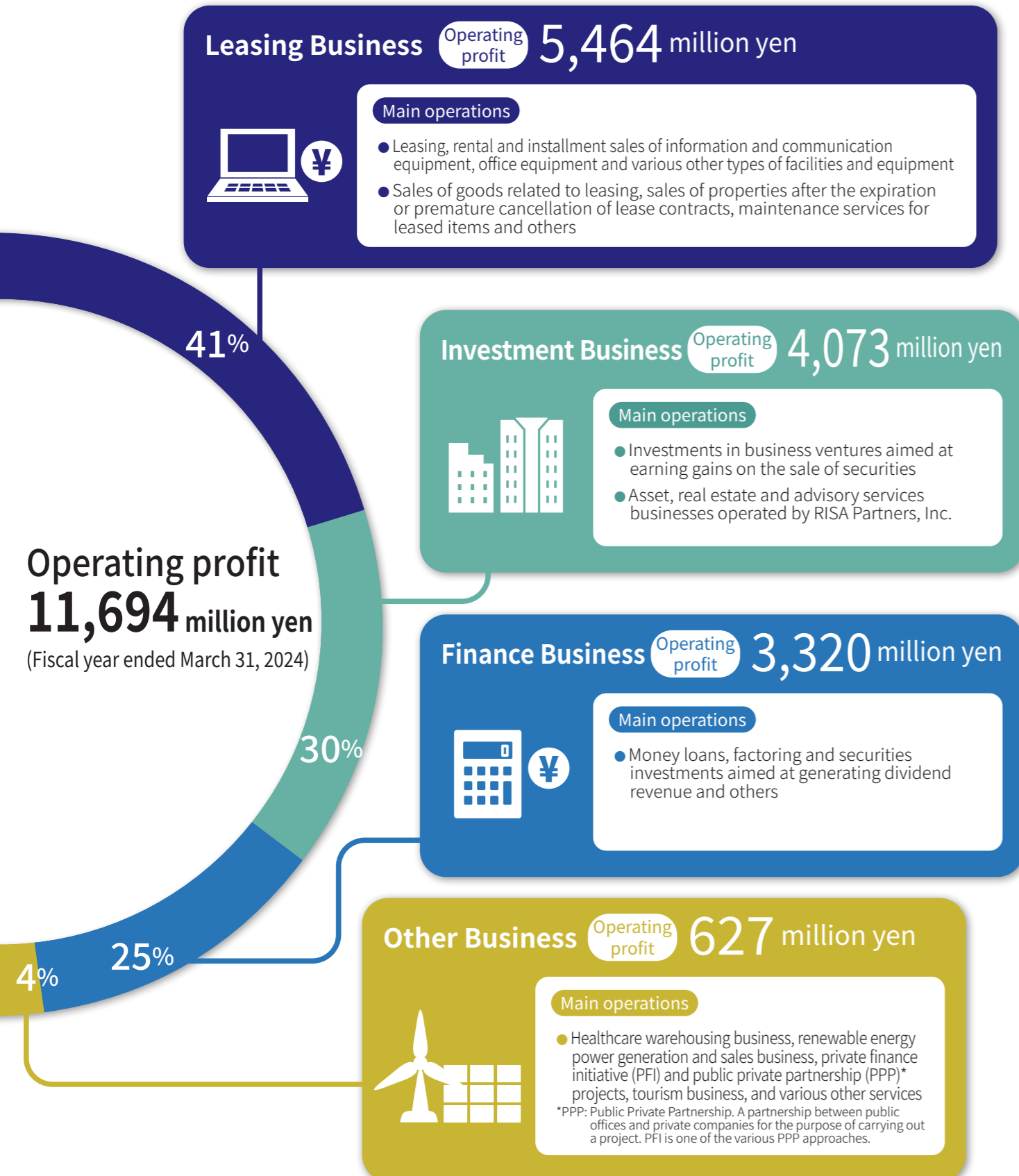
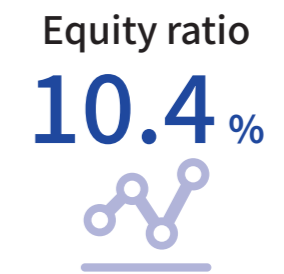


(As of the end of March 2024)

We provide four types of business leveraging the strengths we have nurtured over the years



Financial capital



Human capital

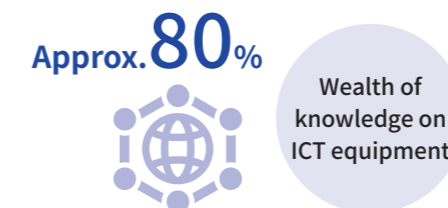


Percentage of mid-career employees and female employees (non-consolidated)

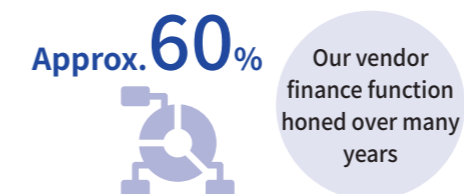


Intellectual capital

Ratio of ICT equipment handled (Average for the past 3 years)
(component ratio of contracts executed by equipment in the Leasing Business)



Ratio of NEC sales channels (Average for the past 3 years)
(component ratio of contracts executed by purchaser in the Leasing Business)



Social relations capital

Number of the national and local government customers



Network of RISA Partners, Inc.



CDP* Climate Change Report 2023



*CDP: An international nonprofit organization that has a global system for the disclosure of environmental information by companies and municipalities.

Years since obtainment of ISO 14001 certification (Environmental management systems)



*The operating profit composition ratio is calculated excluding adjustments for operating profit (company-wide costs not allocated to each segment).